



**CELLAR SELECTION  
BEST BUYS  
RATINGS**  
AT



 **TOP 100 BEST BUYS 2010**

AS SEEN IN NOVEMBER 2010



**WINE ENTHUSIAST**  
MAGAZINE

14



**89** DFJ Vinhos 2006 Alta Corte (Estremadura); \$9. A blend of Caradoc (a cross of Malbec and Grenache) and Tinto Roriz, this is a bold ripe wine that pushes its vivid berry fruits right up front along with some dark tannins. Black cherries and figs show well at the end, along with wood spice and acidity. Imported by Dionysos Imports Inc.



AS SEEN IN THE APRIL 2010



BUYING GUIDE  
BESTBUY



**90** DFJ Vinhos 2006 Grand'Arte Trincadeira (Ribatejano);  
**\$13.** A black, solid wine, spiced heavily with wood but still showing blackberry flavors, textured with plum skins. The wine feels warm and ripe, finishing with black cherries and lingering softness. Imported by Dionysos Imports Inc.



## 100 WINES UNDER \$15 BEST BUYS 2009

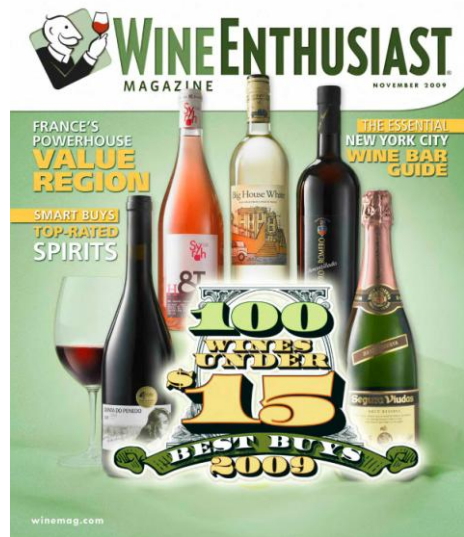
### 20<sup>TH</sup> BEST BUY

BEST BUY  
90



### GRAND'ARTE SHIRAZ RED 2007

Its dark color promises power, and this wine delivers a broad, chunky Shiraz, with perfumed fruit, dark tannins and a spicy wood structure. Solid concentration gives a wine that somehow manages to assimilate a Franco/Australian variety into a dry Portuguese structure. — R.V. (8/1/2009); \$11



OUT OF STOCK

BEST BUY  
89



### GRAND'ARTE

SHIRAZ RED 2008 Regional LISBOA

A big textured, smooth wine, sweet fruits with firm tannins finish with dark perfumes. It is a blockbuster, thankfully without high alcohol, balanced in its richness. A barbecue wine, ready to drink now. R.V.

AS SEEN IN DECEMBER 15, 2010



## BUYING GUIDE



**92** DFJ Vinhos 2007 Grand'Arte Special Selection  
Touriga Nacional (Lisboa); \$15. An impressive  
and elegant wine. It has a delicious line of juicy red and black  
berry fruits, powered with a fine balance of acidity and firm,  
chunky tannins. With good potential, give the wine 3-4 years.  
Imported by Dionysos Imports Inc. *Cellar Selection.*



AS SEEN IN DECEMBER 15, 2010



BUYING GUIDE

BESTBUYS



**91** **DFJ Vinhos 2008 Grand'Arte Touriga Nacional (Lisboa); \$13.** An elegant red, with power, acidity and black berry flavors curling around a structured core of dark tannins. This is cool Touriga, very poised, worth aging for two years, with a delicious spicy aftertaste. Imported by Dionysos Imports Inc.



BEST BUY  
90



## GRAND'ARTE

ALICANTE BOUSCHET RED 2008 Regional LISBOA

Almost black in color, this is a concentrated powerhouse of black plum, damsons and dark berry fruits. It is explosively rich and densely structured with intense juicy fruit. R.V.

BEST BUY  
90



## GRAND'ARTE

ALFROCHEIRO RED 2008 Regional LISBOA

Powerful, concentrated wine, whose tannins fold well around the berry fruits, acidity and sweet plum juice flavors. It is solid and chunky, full of ripe flavors and bold acidity. Worth aging for 1-2 years. R.V.

BEST BUY  
87



## MONTE ALENTEJANO

WHITE 2008 Regional Alentejano

A smooth wine, brightened with flavors of William pear, a zest of lime and a light touch of vanilla. It has attractive acidity, the fruit sitting well with the freshness. **Best Buy.** —R.V.

BEST BUY  
86



## MONTE ALENTEJANO

TRINCADEIRA & ARAGONÊS RED 2008 Regional Alentejano

Spicy wine from the wood and from the ripe berry fruits. The acidity is light, a sideshow to the juicy fruit, flavors of nutmeg and red cherries and a fine kick of dry tannin. **Best Buy.** —R.V.

BEST BUY  
86



## MONTE ALENTEJANO

RESERVA RED 2005 Regional Alentejano

There is an attractive mint character to this wine, that follows through to a juicy fruit character with a ripe blackberry jam flavor. The acidity keeps the whole wine soft, sweet and fresh. —R.V.

BEST BUY  
85



## MONTE ALENTEJANO

ROSE 2008 Regional Alentejano

Soft, smooth and ripe wine, its strawberry flavors just off-dry. The acidity makes a good balance, lifting the wine and emphasizing the light tannic touch. A good food rosé. —R.V.



**BEST BUY**  
**89**



## DFJ

CALADOC & ALICANTE BOUSCHET RED 2008 Regional LISBOA

Winemaker José Neiva delights in unusual blends such as this particular combination which should be tried more often. It is a big rich wine, packed with ripe flavors, plums, dark chocolate, rich sweet berries and firm tannins. R.V.

**BEST BUY**  
**88**



## DFJ

PINOT NOIR & ALFROCHEIRO RED 2008 Regional LISBOA

Here in the maritime climate north of Lisbon. Alfrocheiro works well to produce a rich, smooth and velvet textured wine, with a beautiful layer of acidity over the wood. R.V.

**BEST BUY**  
**88**



## DFJ

TOURIGA NACIONAL & TOURIGA FRANCA RED 2008 Regional LISBOA

An attractive, fresh wine, the tannins and bright acidity giving a firm support to the lively berry fruits and dry tannin core. The aftertaste continues freshness. R.V.

**BEST BUY**  
**86**



## PORTADA

VINHO REGIONAL LISBOA WHITE 2009

Light, fresh and crisp, typical of bright cool whites of the Lisbon region. It has lively, fresh acidity, picked out with lemon and grapefruit flavors.

**BEST BUY**  
**84**



## PORTADA

VINHO REGIONAL LISBOA RED 2007

Fresh, herbal and stinky, a light-bodied red wine that has some well-balanced residual sugar to go with the red berry fruits. The soft texture masks the acidity. Screw cap.

**BEST BUY**  
**85**



## PORTADA

VINHO REGIONAL LISBOA ROSE 2009

Fresh and fruity, with attractive pink coloring, this light rosé has raspberry flavors, a touch of sweetness and caramel. It finishes bright and crisp.

BEST BUY  
85



## CORETO

RED 2006 Regional Lisboa

The wine region of Lisboa (Lisbon) is the changed name for Estremadura's regional wines, although some confusion remains. This red in the Coreto range has some attractive berry fruits along with a soft, velvet structure that makes it an easy drink. Screwcap. —R.V.

BEST BUY  
84



## CORETO

WHITE 2008 Regional Lisboa

A soft and creamy wine, freshened with a little citrus. It has only light acidity, the main focus being pear and red apple flavors. It rolls easily around the palate, finishing freshly. Screwcap. —R.V.

BEST BUY  
84



## CORETO

ROSE 2008 Regional Lisboa

A lively, crisp wine, packed with bright raspberries, red cherries and acidity. It has a touch of caramel, but no more. The freshness is much more important. Screwcap. R.V.

BEST BUY  
86



## PEDRAS DO MONTE

CABERNET & TINTA RORIZ RED 2008 VINHO REGIONAL LISBOA

An elegant wine, the tannins a core element in the firm structure. Acidity and black currant flavors go together with spice. It is a young wine, ready to drink, but will develop. —R.V.

BEST BUY  
85



## PEDRAS DO MONTE

CASTELÃO RED 2008 VINHO REGIONAL PENINSULA DE SETÚBAL

Attractive spicy wine from Setúbal region's signature grape. Ginger, berries and light wood work well together to give richness without weight. —R.V.

BEST BUY  
84



## PEDRAS DO MONTE

RED 2007 Terras do Sado

The wine tastes young, its fruits and wood characters not quite integrated. But it has a good light touch of redcurrants and blackberries to go with the acidity. The wood gives dry tannins and a firm structure. - **R.V.** (4/1/2010)

BEST BUY  
89



## POINT WEST

TOURIGA NACIONAL RED 2005

It is called Point West because Estremadura's vineyards are the furthest west in Europe. The wine itself is soft and fruity initially, but then there is a tight tannic texture, followed by black currant fruits. The wine is finely made, elegant, just on the warm side of cool. R.V. (8/1/2009)

BEST BUY  
85



## POINT WEST

ALVARINHO & CHARDONNAY WHITE 2008 Regional Lisboa

The Estremadura region, north of Lisbon, is at the western extremity of mainland Europe. It produces a good line in this style of fresh, crisp wines, light and bright. There is just a hint of sweetness, with currant flavors and a final softness. —R.V.